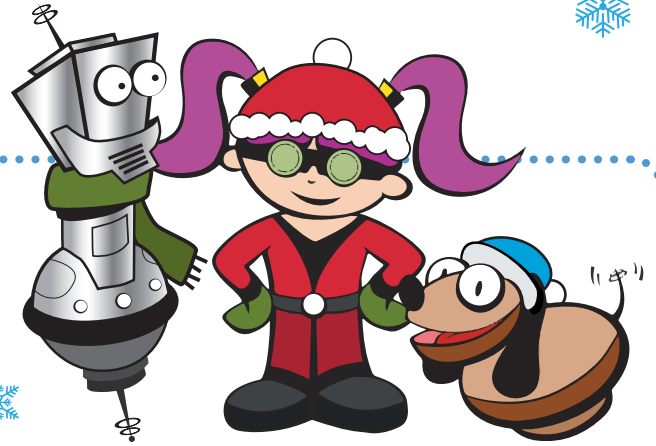




WINTER 2018



### Snowflake Count Down!

It's snowing in the galaxy! Help the Planet M Pals count how many snowflakes are on the front and back of this page!

Answer: 31 Snowflakes

Help Byte catch his friend, the snowman's hat!

The wind blew away the snowman's hat! Which trail of wind should byte follow to catch his hat?



### Winter Joke

Why was the snowman sad?  
Because he had a meltdown!

### Winter Savings!

It's time to start saving!  
Your Planet M friends are ready to help you.

Byte, Hanc, and Penny want you to get a prize from the Planet M Treasure Box!  
Make 10 Deposits to your bank account and get a prize!



### 10 Deposits = A Prize!

### Mitten Decorating

The Planet M Pals want to go play in the snow!  
Can you color in Penny's mitten so she can go outside?

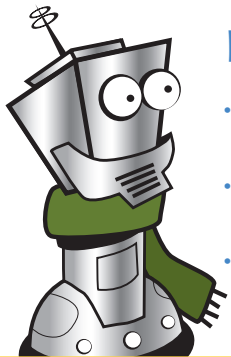


"Thanks for your help!"  
-Penny



## Mitten Match!

Everybody's ready to play outside, but Uh-Oh! It looks like everyone's mittens have gotten scrambled. **Can you help Penny match each mitten to its pair?**



### Did you know?

- Snowflakes form in a variety of different shapes.
- Snow forms when water vapor in the atmosphere freezes into ice crystals.
- Each snowflake could have as many as 200 crystals in them!

### Winter Joke

**What do you call a snowman party?**  
A snowball!

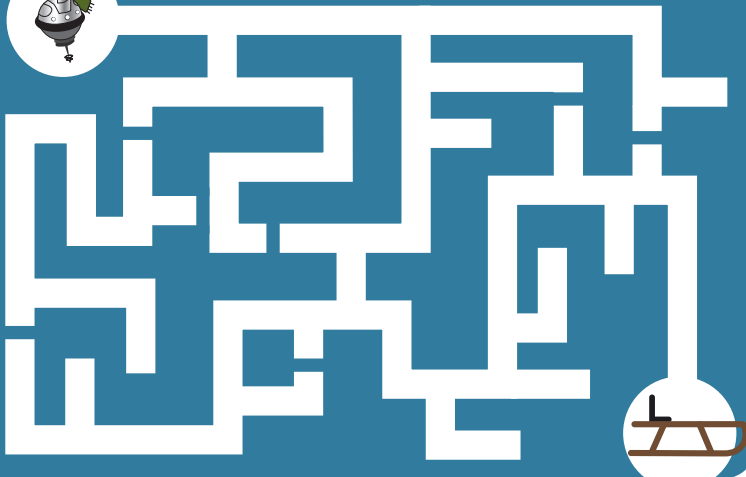


### Is it your Birthday?

Don't forget to stop in on your birthday to get a prize from the Planet M Treasure Box! **Also, keep an eye on the mail for your birthday card!**



### Help Hank Find his Sled!



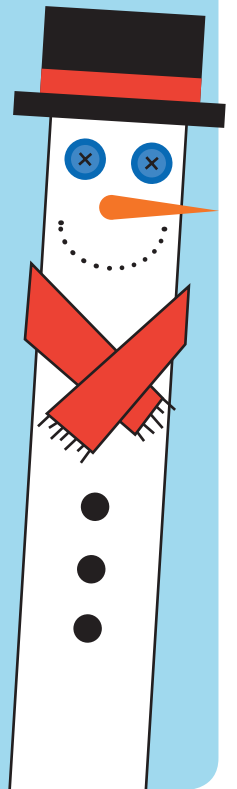
### Snowman Craft

Have you ever made a snowman and wanted to take it in the house with you? Now you can!

#### What you will need:

- Popsicle stick or paint stick
- Felt or Fabric
- White paint
- Paint Brushes
- A hot glue gun and craft glue
- Buttons
- Markers

1. Get your popsicle stick and paint both sides white with your paint.
2. Let the paint dry.
3. While the paint is drying, you can start creating clothes for your snowman. Cut out the felt to create a warm hat for your snowman. Use another felt color to create a ribbon for the hat.
4. Next create your snowman's scarf. Use the fabric to cut a rectangle. Decorate it.
5. Cut a triangle out of orange fabric for a nose.
6. Now that your snowman is dry from painting, we can add his clothes. Have a parent or an adult help you with a hot glue gun. Use the hot glue to attach the hat and scarf to your snowman. Use buttons for eyes and the triangle for the nose
7. Lastly, use your marker to give your snowman a smile and body buttons.



### Winter Wonderland Word Search

S N O W H S L E D P C A C  
 C A I I W Y U A S T A R O  
 A F R N L A H E T A Y P L  
 R A A T Y B A M R D C N D  
 F A S E N Y T R C O A T P  
 A R T R N T R H N E A R A  
 S P E C E J A N U A R Y N  
 U F R O Z E N R U N G A O  
 A T O M A Y M I T T E N S  
 I C E R F R O S T Y N P M

SNOW	ICE	FROZEN	HAT
WINTER	COLD	SLED	COAT
SCARF	FROSTY	JANUARY	MITTENS

### Closed Dates:

LAFCU is closed on the following holidays:

**MLK Day:**  
January 15

**President's Day:**  
February 19